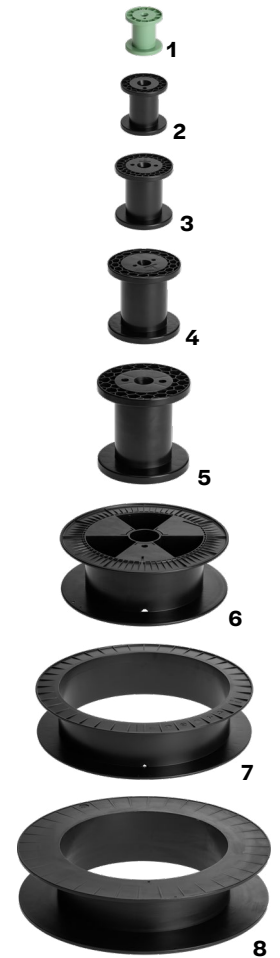
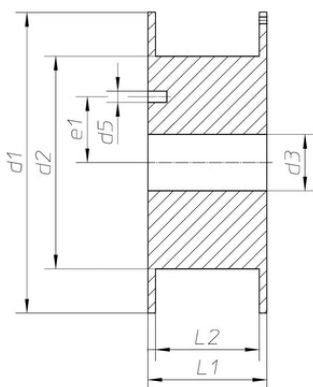


# COILS CHARACTERISTICS (IN MM)

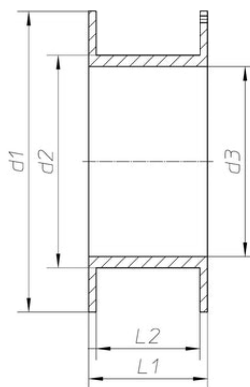
COIL TYPE	d1	d2	d3	d5	e1	L1	L2
<b>DIN63</b> <sup>(1)</sup>	63	40	11	5	15	63	49
<b>DIN80</b> <sup>(2)</sup>	80	50	16	7	20	80	64
<b>DIN100</b> <sup>(3)</sup>	100	63	16	7	20	100	80
<b>DIN125</b> <sup>(4)</sup>	125	80	16	7	20	125	100
<b>DIN160</b> <sup>(5)</sup>	160	100	22	13	32	160	128
<b>SD300K</b> <sup>(6)</sup>	300	212	51.5	10	44.5	103	91
<b>SH390K</b> <sup>(7)</sup>	390	310	305	-	-	89	79
<b>SH460K</b> <sup>(8)</sup>	460	319	305	-	-	105	91



SD300K



SH390K | SH460K



DIN63 | DIN80 | DIN100 | DIN125 | DIN160

