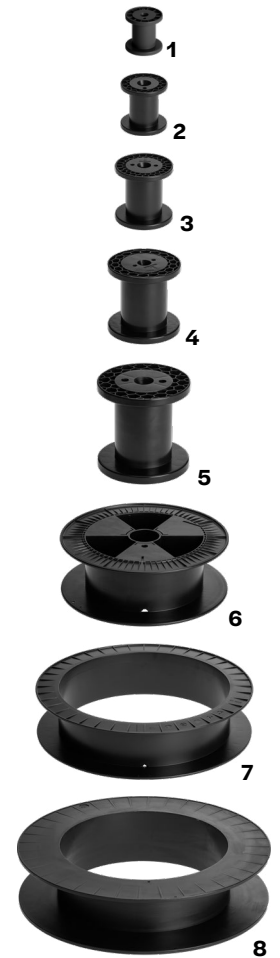
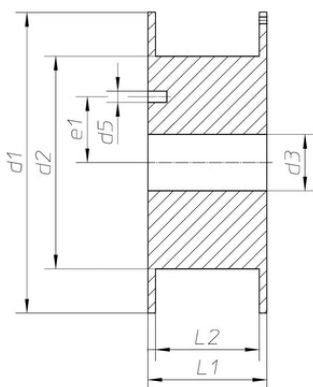


COILS CHARACTERISTICS (IN MM)

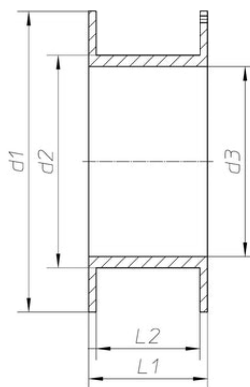
COIL TYPE	WEIGHT	d1	d2	d3	d5	e1	L1	L2
DIN63 ⁽¹⁾	40 gr	63	40	11	5	15	63	49
DIN80 ⁽²⁾	70 gr	80	50	16	7	20	80	64
DIN100 ⁽³⁾	125 gr	100	63	16	7	20	100	80
DIN125 ⁽⁴⁾	200 gr	125	80	16	7	20	125	100
DIN160 ⁽⁵⁾	350 gr	160	100	22	13	32	160	128
SD300K ⁽⁶⁾	610 gr	300	212	51.5	10	44.5	103	91
SH390K ⁽⁷⁾	530 gr	390	310	305	-	-	89	79
SH460K ⁽⁸⁾	1830 gr	460	319	305	-	-	105	91



SD300K



SH390K | SH460K



DIN63 | DIN80 | DIN100 | DIN125 | DIN160

